

# KIT PRODUCT TECHNICAL DATASHEET

## KIT BH30/806

Brushless 

Intensive use 

Digital Encoder 

Magnetic limit switch 



### Composition KIT BH30/806

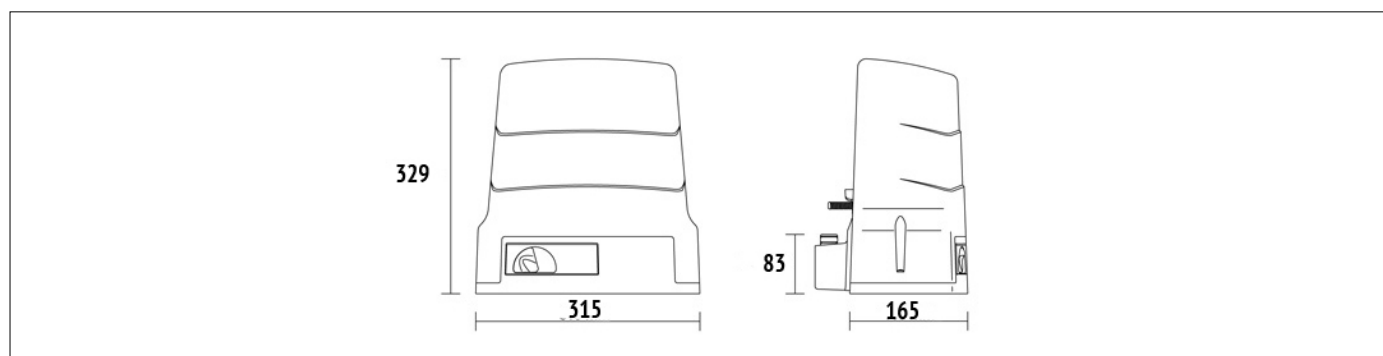
CODE	DESCRIPTION	QTY
<b>BH30/804</b>	Electromechanical motor BRUSHLESS, low voltage, super intensive use, with native encoder on-board, irreversible, ideal for sliding gates up to 1000 kg with, built-in digital controller B70 series. Complete with fixing plate with tie rods and magnetic limit switch. With 2-channel radio receiver installed on board.	1
<b>SYNUS/2</b>	Dual code transmitter (modality fixed code or rolling code), 433,92 MHz, 2 channels, with copy function.	2
<b>R90/F4ES</b>	Pair of external photocells synchronized 24V AC/DC, up to a maximum of 4 pairs of photocells.	1
<b>FIFTHY/24</b>	LED flashing light 24V with integrated antenna.	1
<b>R99/C/001</b>	Signboard "Automatic Opening".	1

### PRODUCT TECHNICAL SPECIFICATIONS

Max gate weight	1000 kg
Power line supply	230V AC - 50Hz
Stand-by consumption	0,5W
Motor power supply	24V
Power rating	200W
Frequency of use	Intensive use
Thrust	50 - 1000N
Operating temperature	-20+55°C
Protection level	IP44
Reductor Type	Irreversible
Manoeuvre speed	12 m/min (0.20 m/s)
Limit switch	Magnetic

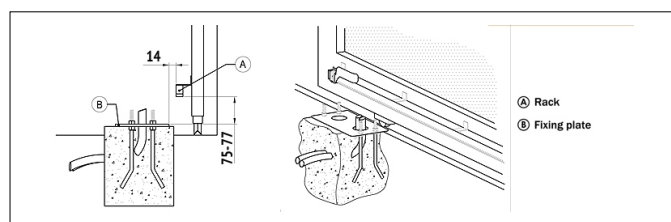
Onboard control unit	B70/1DC
Encoder	Digital native encoder + magnetic digital SENSORED, 4096 PPR
Batteries recovery	Optional 2 internal battery 12V 1,2AH - Optional 2 external battery 12V 4,5AH
Type exit gear	Z15/mod 4
Operating cycles per day (opening/closing - 24 hours no stop)	1300
Maximum dimension product in mm (L x W x H)	315 x 165,8 x 329
Product weight packed (Kg)	13,1
Number items per pallet/box	44

# PRODUCT DIMENSIONS AND PREPARING FOR INSTALLATION

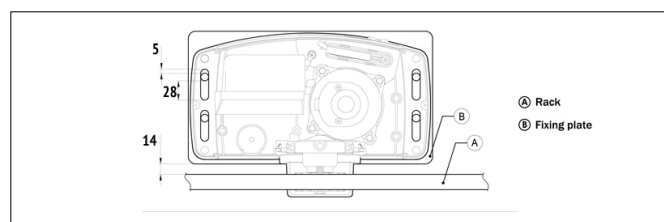


DIMENSIONS

## PRODUCT PREPARING FOR INSTALLATION

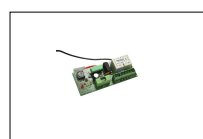


PREDISPOSITION FOR STANDARD INSTALLATION



PREDISPOSITION FOR STANDARD INSTALLATION

## PRODUCT ACCESSORIES



**B71/BC**  
Batteries charger for Brushless digital controller B70/1DC - B70/1T.



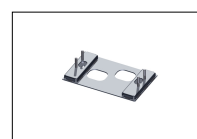
**BT12V12**  
Battery 12V 1.2 Ah (1 pc).



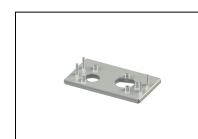
**BT12V45**  
Battery 12V 4.5 Ah (1 pc).



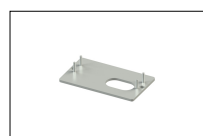
**KT214/SA**  
Adapter plate complete with the tie rods and screws for series H30.



**KT214/SC**  
Adapter plate complete with the tie rods and screws for series H30.



**KT214/SF**  
Adapter plate complete with the tie rods and screws for series H30.



**KT214/SN**  
Adapter plate complete with the tie rods and screws for series H30.



**KT221**  
Raised fixing plate for H30 series (+3,5 cm).



**HT418**  
External box without batteries, for battery BT12V45 (12V DC 4,5 Ah).



**HT421**  
External box without batteries, for battery BT12V45 (4,5 Ah), BT12V70 (7 Ah) and BT12V120 (12 Ah), up to a maximum of 3 batteries.



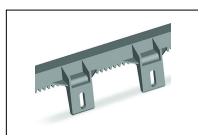
**GA550**  
Galvanised steel rack 22x22x1000, module 4.



**GA551**  
Galvanised steel rack 30x12x1000, module 4, complete with spacers and screws.



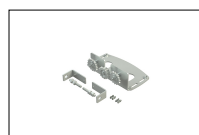
**GA554**  
Pocket of 6 spacers (2,5 cm) with screws.



**GA553**  
Nylon rack module 4 with 6 connectors L.1000.



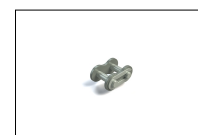
**GA557**  
Roger Technology nylon rack, module 4 to 6 connectors, L.1000.



**LT330**  
Kit for chain drive for BH30 - H30 series.



**LT334**  
1/2" X 5/16" 5 meter chain piece for LT330 complete with joint.



**LT335**  
1/2" X 5/16" joint for LT334 chain section.