

Milesight

4K H.265 Mini NVR 1000 Series

4K+H.265



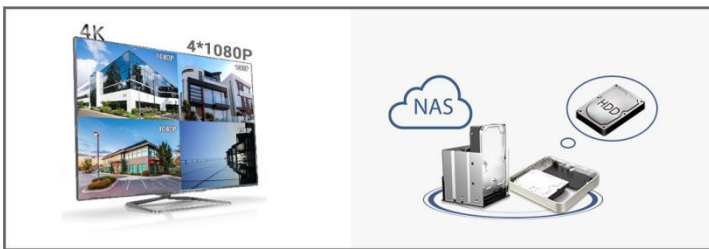
DATASHEET

KEY FEATURES

- ▶ 4/8-CH Network Video Input (Up to 4/8 channel IP cameras can be connected.)
- ▶ H.265* (H.265* allows to cut down 70%~80% bandwidth while ensuring the high quality of images compared with H.264.)
- ▶ Dual Stream Recording (Supporting Primary Stream and Secondary Stream recording simultaneously.)
- ▶ HTML5 Streaming Ready (Support previewing the video via all major browsers without plug-in when Video Codec is set to H.265.)
- ▶ Auto Backup (The latest 24 hour's video will be automatically backed up to USB port devices or NAS after setting up the backup.)
- ▶ Versatile Interfaces (A whole array of ports provides all necessary features for effective surveillance.)

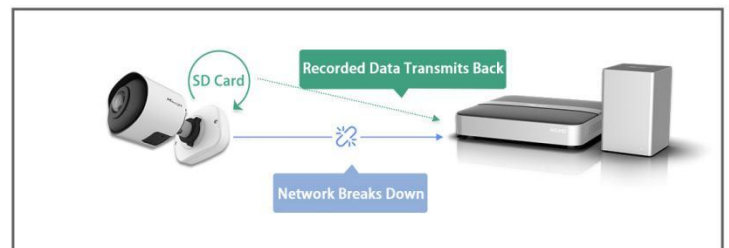
Power Decoding Capacity & Flexible Storage Options

- The 4K NVR is equipped with solid 4K decoding and display capabilities and maximum supports simultaneous viewing of 4*1080P or 8*720P network cameras.
- Providing flexible storage options including HDD and NAS to address the needs for versatile storage.



Reliability

- ANR can store video data on the camera storage card when network between IPC and NVR is disconnected and retransfer the recorded video to NVR after network recovers.



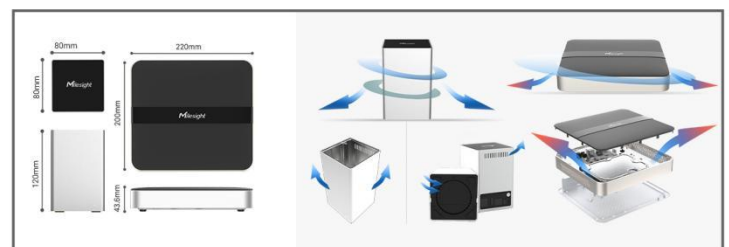
AI Video Analytics & POS Integration

- All-in-one to Manage AI:
VCA Function focus on human and vehicle detection.
People Counting provides high-accuracy data and statistic reports.
- POS machine information can be transferred to and displayed on the NVR.



Ultra Mini Size & Thermal Design

- Ultra-mini size offers a compact design without compromising functionality, providing an easier way to ensure high-quality video management.
- The metal panel on the bottom of the NVR dissipates the heat effectively and the ventilation holes on the side and bottom panels maximize airflow and carry heat away.





| Model | | MS-N1004-UC | MS-N1008-UC | MS-N1008-UNC |
|-------------------------|----------------------|--|--|---------------------------------|
| Video/Audio Input | Network Video Input | 4-CH | | 8-CH |
| | Bandwidth | Incoming | 40Mbps | |
| | | Outgoing | 40Mbps | |
| Video/Audio Output | HDMI Output | 1-CH, Resolution: 3840x2160/30Hz, 1920x1080/60Hz, 1920x1080/50Hz, 1280x1024/60Hz, 1280x720/60Hz, 1024x768/60Hz HDMI Supports Audio Output | | |
| | Dual Stream | Support | | |
| | Recording Resolution | 8MP/6MP/5MP/4MP/3MP/1080P/UXGA/720P/D1/VGA/CIF/QCIF | | |
| | Synchronous Playback | 1*(30fps @8MP), 1*(30fps @6MP), 1*(30fps @5MP), 2*(30fps @4MP), 2*(30fps @3MP), 4*(30fps @1080P), 4*(30fps @720P) | 1*(30fps @8MP), 1*(30fps @6MP), 1*(30fps @5MP), 2*(30fps @4MP), 2*(30fps @3MP), 4*(30fps@1080P), 8*(30fps @720P) | |
| Video/Audio Compression | Video Compression | H.265*/H.265(HEVC)/H.264*/H.264 | | |
| | Audio Compression | G.711/AAC/G.722/G.726 | | |
| | Sample Rate | 8KHz/16KHz | | |
| Storage | SATA | 1*SATA HDD(3.5") | | 2*SATA HDD(2.5") |
| | Capacity | Up to 10TB capacity for each HDD | | Up to 4TB capacity for each HDD |
| Recording Management | Recording Type | Continuous, Event (Motion Detection, Alarm, VCA, Smart Analysis) | | |
| | Snapshot Type | N/A | | |
| | Playback Type | General Playback, Event Playback, Tag Playback, Split Playback, Picture Playback | | |
| Backup | Backup | Video Backup, Image Backup | | |
| Network | Protocol | IPv4/IPv6, TCP, UDP, RTP, RTSP, RTCP, HTTP, HTTPS, DNS, DDNS, DHCP, NTP, SNTP, SMTP, SNMP, UPnP, NFS | | |
| External Interface | Network Interface | 1*RJ45 10/100Mbps | | 1*RJ45 10/100/1000Mbps |
| | USB Interface | 2*USB 2.0 | | |
| General | Compatibility | ONVIF, API | | |
| | Advanced Function | ANR | | |
| | ANPR | N/A | | |
| | Video Analysis | Region Entrance, Region Exiting, Advanced Motion Detection, Tamper Detection, Line Crossing, Loitering, People Counting, Object Left, Object Removed | | |
| | Keyboard Control | Milesight Keyboard (MS-K01) | | |
| | Power Supply | DC 12V 2A | | DC 12V 1.5A |
| | Consumption | ≤2.3W(Without HDD) | | ≤4.1W(Without HDD) |
| | Working Conditions | Temperature: -10℃~55℃/Humidity: 10%~90% | | |
| | Dimensions | 220mm(W)X200mm(D)X43.6mm(H) | | 80mm(W)X80mm(D)X120mm(H) |
| | Weight | 0.19Kg | | 0.85Kg |
| Warranty | 3/5 Years | | | |



Interfaces

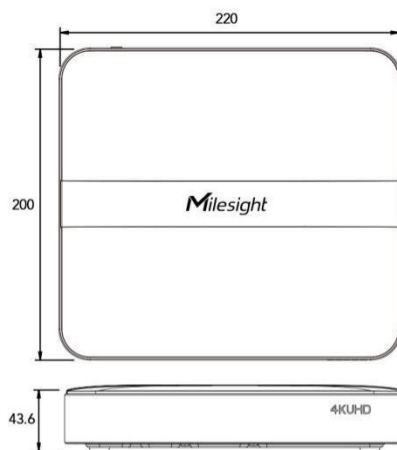
MS-N1004-UPC/ MS-N1008-UPC



- 1. LED Indicator
- 2. Power Button
- 3. USB
- 4. HDMI
- 5. LAN
- 6. PoE Port 1/2/3/4
- 7. Power

Structure Diagrams

MS-N1004-UPC/ MS-N1008-UPC



Units: mm

Naming Convention

