

# 4K Mini PoE NVR 1000 Series



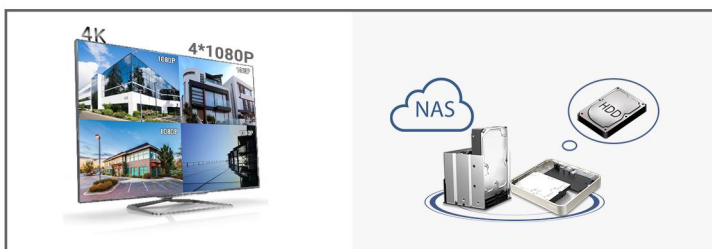
**DATASHEET**

## KEY FEATURES

- ▶ 4/8-CH Input & 4\*PoE Ports (4/8 channel are supported, and PoE ports design provides just one step to connect.)
- ▶ Dual Stream Recording (Supporting Primary Stream and Secondary Stream recording simultaneously.)
- ▶ Auto Backup (The latest 24 hour's video will be automatically backed up to USB port devices or NAS after setting up the backup.)
- ▶ Versatile Interfaces (A whole array of ports provides all necessary features for effective surveillance.)

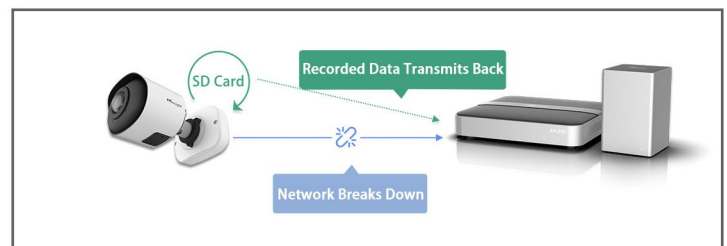
### Power Decoding Capacity & Flexible Storage Options

- The 4K NVR is equipped with solid 4K decoding and display capabilities and maximum supports simultaneous viewing of 4\*1080P or 8\*720P network cameras.
- Providing flexible storage options including HDD and NAS to address the needs for versatile storage.



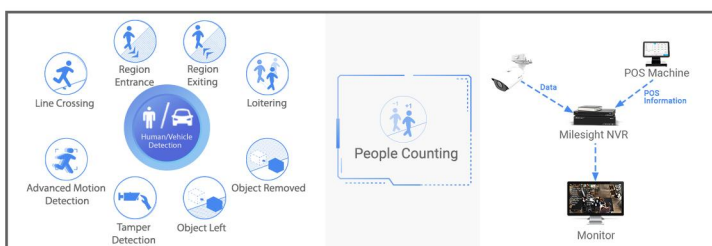
### Reliability

- ANR can store video data on the camera storage card when network between IPC and NVR is disconnected and retransfer the recorded video to NVR after network recovers.



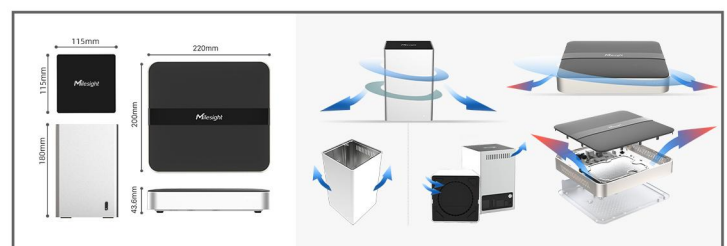
### AI Video Analytics & POS Integration

- All-in-one to Manage AI: VCA Function focus on human and vehicle detection. People Counting provides high-accuracy data and statistic reports.
- POS machine information can be transferred to and displayed on the NVR.



### Ultra Mini Size & Thermal Design

- Ultra-mini size offers a compact design without compromising functionality, providing an easier way to ensure high-quality video management.
- The metal panel on the bottom of the NVR dissipates the heat effectively and the ventilation holes on the side and bottom panels maximize airflow and carry heat away.



# 4K Mini PoE NVR 1000 Series



Model		MS-N1004-UPC	MS-N1008-UPC	MS-N1008-UNPC
Video/Audio Input	Network Video Input	4-CH	8-CH	
	Bandwidth	Incoming	40Mbps	80Mbps
		Outgoing	40Mbps	80Mbps
Video/Audio Output	HDMI Output	1-CH, Resolution: 3840x2160/30Hz, 1920x1080/60Hz, 1920x1080/50Hz, 1280x1024/60H, 1280x720/60Hz, 1024x768/60Hz HDMI Supports Audio Output		
	Dual Stream	Support		
	Recording Resolution/ Synchronous Playback	<p>*The recommended parameters are theoretical values only. Actual performance may vary depending on the usage environment, the number of connected cameras, and their models. *Resolutions with width or height &gt;4096 not supported for decoding.</p> <p>When the bite rate is ≤2048 kbps: 1*(30fps @8MP), 1*(30fps @6MP), 1*(30fps @5MP), 2*(30fps @4MP), 2*(30fps @3MP), 4*(30fps @1080P), 4*(30fps @720P)</p> <p>When the bite rate is ≤2048 kbps: 1*(30fps @8MP), 1*(30fps @6MP), 1*(30fps @5MP), 2*(30fps @4MP), 2*(30fps @3MP), 4*(30fps@1080P), 8*(30fps @720P)</p>		
Video/Audio Compression	Video Compression	H.265+/H.265(HEVC)/H.264+/H.264 *H.265 decoding is supported with performance limitations depending on stream settings. System performance may vary based on bitrate, resolution, and number of channels.		
	Audio Compression	G.711/AAC/G.722/G.726		
	Sample Rate	8KHz/16KHz		
Storage	SATA	1*SATA HDD(3.5")		
	Capacity	Up to 10TB capacity for each HDD		
Recording Management	Recording Type	Continuous, Event (Motion Detection, Alarm, VCA, Smart Analysis)		
	Snapshot Type	N/A		
	Playback Type	General Playback, Event Playback, Tag Playback, Split Playback, Picture Playback		
Backup	Backup	Video Backup, Image Backup		
Network	Protocol	IPv4/IPv6, TCP, UDP, RTP, RTSP, RTCP, HTTP, HTTPS, DNS, DDNS, DHCP, NTP, SNTP, SMTP, SNMP, UPnP, NFS		
External Interface	Network Interface	1*RJ45 10/100Mbps	1*RJ45 10/100/1000Mbps	
	USB Interface	2*USB 2.0		
PoE Interface	Interface	4*RJ45 10/100Mbps		
	Power Output	≤40W		
	Supported Standard	IEEE 802.3af/at		
General	Compatibility	ONVIF, API		
	Advanced Function	ANR		
	ANPR	N/A		
	Video Analysis	Region Entrance, Region Exiting, Advanced Motion Detection, Tamper Detection, Line Crossing, Loitering, People Counting, Object Left, Object Removed		
	Keyboard Control	Milesight Keyboard (MS-K01)		
	Power Supply	DC 48V 1.3A	DC 48V 1.25A	
	Consumption	≤3.5W(Without HDD, without enabling PoE )	≤4.4W(Without HDD, without enabling PoE )	
	Working Conditions	Temperature: -10°C~55°C/Humidity: 10%~90%		
	Dimensions	220mm(W)X200mm(D)X43.6mm(H)	115mm(W)X115mm(D)X180mm(H)	

# 4K Mini PoE NVR 1000 Series



<b>General</b>	Weight	0.2Kg	1.5Kg
	Warranty	3/5 Years	

V8.04

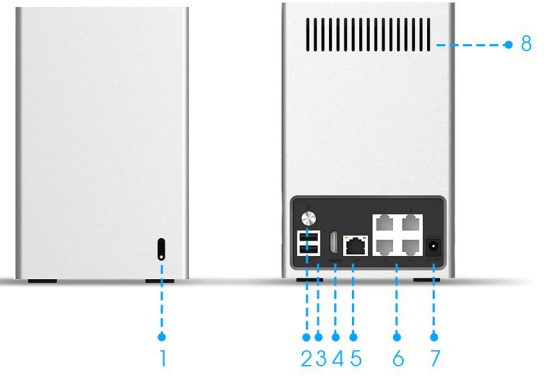


## Interfaces

MS-N1004-UPC/ MS-N1008-UPC



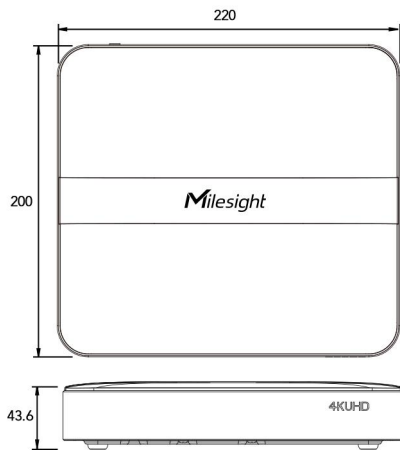
MS-N1008-UNPC



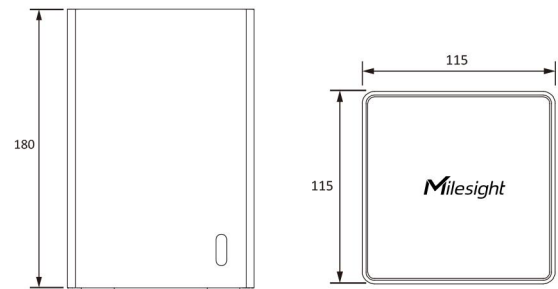
- 1. LED Indicator
- 2. Power Button
- 3. USB
- 4. HDMI
- 5. LAN
- 6. PoE Port 1/2/3/4
- 7. Power
- 8. Ventilation Hole

## Structure Diagrams

MS-N1004-UPC/ MS-N1008-UPC



MS-N1008-UNPC



Units: mm

## Naming Convention

